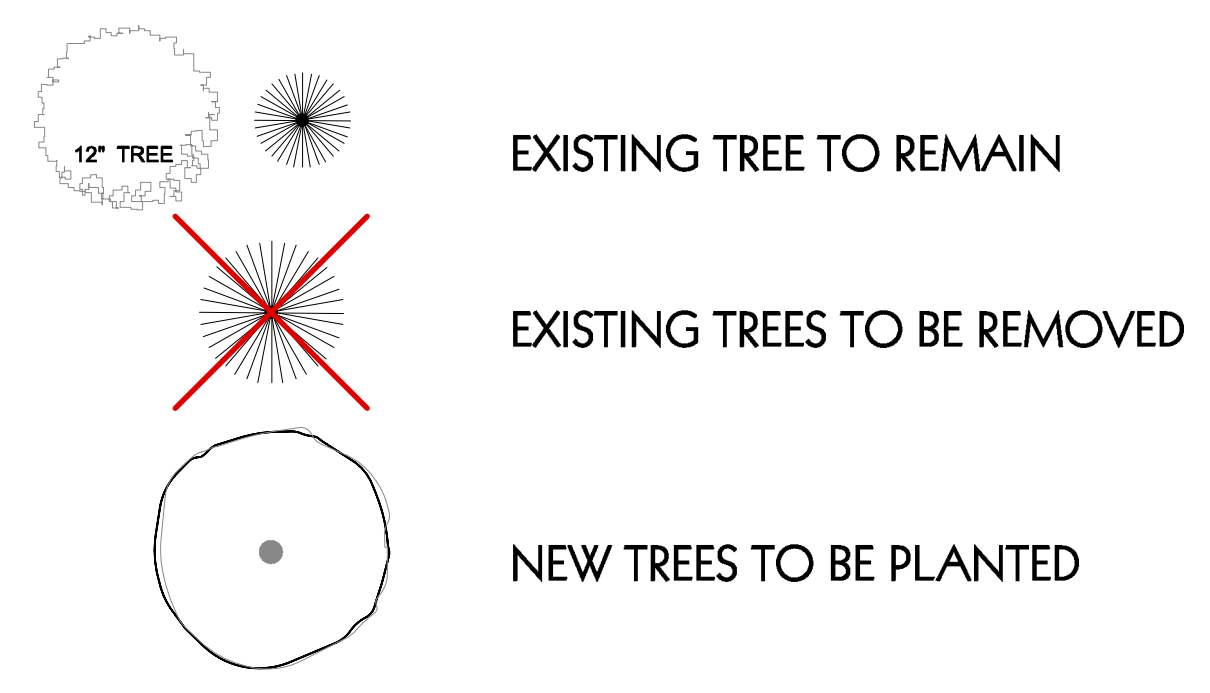




LEGEND:

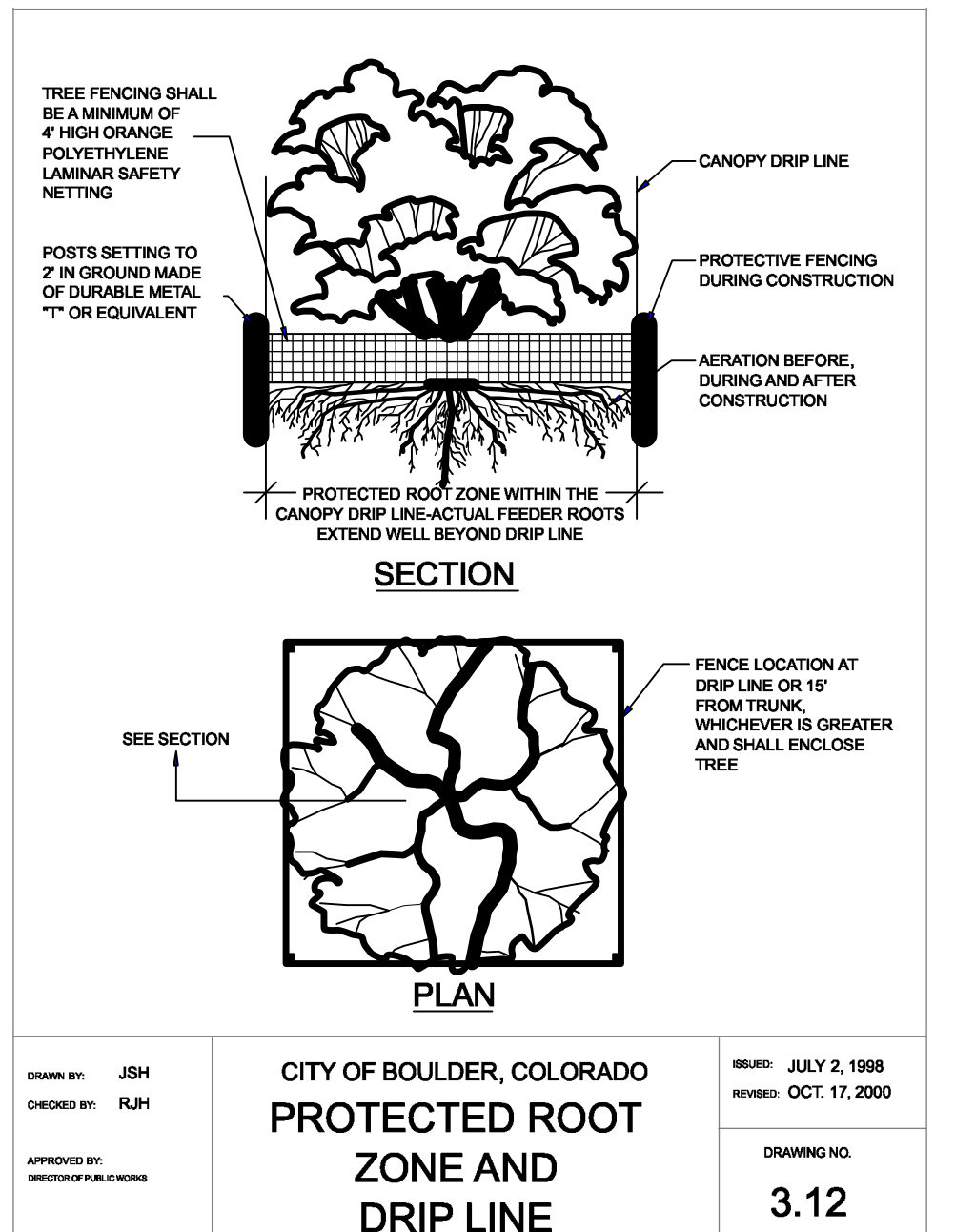
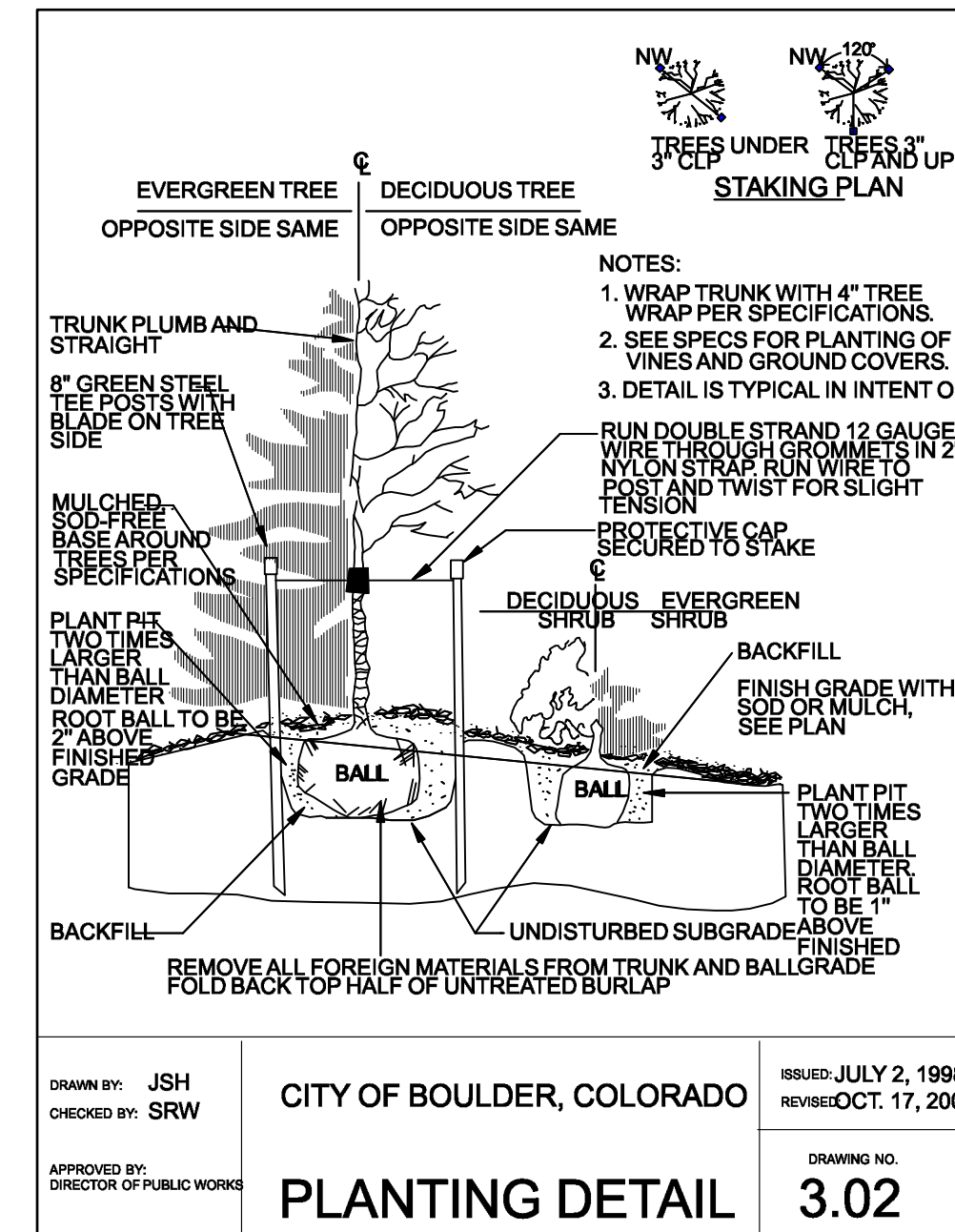


PLANT LIST: 1/18/19

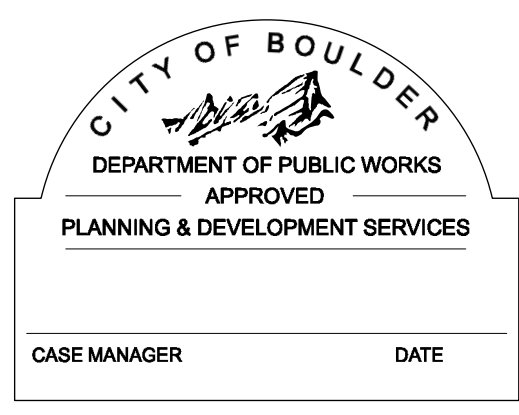
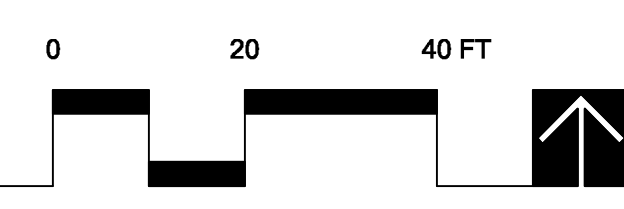
KEY	QTY	SCIENTIFIC NAME	COMMON NAME	SIZE	O.C. SPACING
SHADE TREES:					
PLW	3	Salix amygdaloides	Peachleaf Willow	2' dp.	as shown
TOTAL:	3				

PLANT NOTES:

- TREES SHALL NOT BE PLANTED CLOSER 10 FEET TO ANY SEWER OR WATER LINE. TREE PLANTING SHALL BE COORDINATED WITH XCEL ENERGY COMPANY. LOCATIONS OF ALL UTILITIES SHALL BE VERIFIED IN THE FIELD PRIOR TO PLANTING.
- GRADES SHALL BE SET TO ALLOW FOR PROPER DRAINAGE AWAY FROM STRUCTURES. GRADES SHALL MAINTAIN SMOOTH PROFILES AND BE FREE OF SURFACE DEBRIS, BUMPS, AND DEPRESSIONS.
- DEVELOPERS SHALL ENSURE THAT THE LANDSCAPE PLAN IS COORDINATED WITH THE PLANS DONE BY OTHER CONSULTANTS SO THAT THE PROPOSED GRADING, STORM DRAINAGE, OR OTHER CONSTRUCTIONS DOES NOT CONFLICT NOR PRECLUDE INSTALLATION AND MAINTENANCE OF LANDSCAPE ELEMENTS ON THIS PLAN.
- PRIOR TO INSTALLATION OF PLANT MATERIALS, AREAS THAT HAVE BEEN COMPACTED OR DISTURBED BY CONSTRUCTION ACTIVITY SHALL BE THOROUGHLY LOOSENEED, ORGANIC SOIL AMENDMENTS SHALL BE INCORPORATED AT THE RATE OF AT LEAST FIVE (5) CUBIC YARDS PER 1000 SQUARE FEET OF LANDSCAPE AREA IN ALL TURF AND SHRUB BEDS.
- MATCH EXISTING SOD AS BEST AS POSSIBLE.
- ALL LANDSCAPE (PLANT MATERIALS AND GRASS) WILL BE IRRIGATED WITH AN AUTOMATIC SYSTEM. TURF AREAS WILL HAVE A SPRAY ZONE. PLANTS WITH LIKE WATER REQUIREMENTS ARE SHOWN TOGETHER IN ORDER TO HAVE AN EFFICIENT USE OF WATER.
- REFER TO THE CITY OF BOULDER DESIGN AND CONSTRUCTION STREETSCAPING STANDARDS FOR ALL WORK WITHIN PUBLIC AREAS, INCLUDING TREE PROTECTION STANDARDS. THE DEVELOPER WILL MAKE EVERY EFFORT POSSIBLE TO PROTECT TREES WITHIN THE SITE USING THE SAME STANDARDS.



LANDSCAPE PLAN
SCALE: 1"= 20'-0"



LANDSCAPE PLAN

SCOTT, COX & ASSOCIATES, INC.
consulting engineers • surveyors
1530 55th Street • Boulder, Colorado 80303
(303) 444 - 3051

Designed by	SG	Date	01/21/19	Scale	As Shown	Drawing no.	18162C-1	Sheet	L1.01
Drawn by	SG	Revision		Description		Date		Project no.	18162C
Checked by	OSLA								